

Timber World

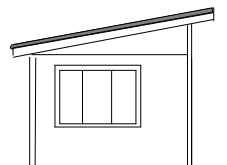
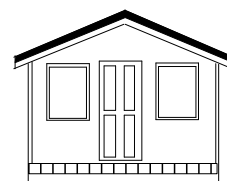
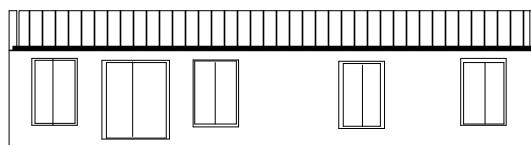
Portable Cabins and Homes Sample Plans and Inclusions

Welcome to Timber World Portable Cabins and Homes

We specialize in manufacturing transportable cabins and homes made from quality sustainable wood products. The following sample plans are indicators of our range. All projects are quoted individually so choices of materials, sizes of windows and kitchens, whether you would like built-in wardrobes, or us to paint etc will make a difference to your final price.

Kits are also available

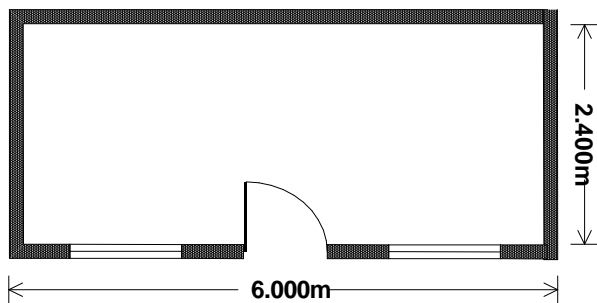
Please contact us for a price list or obligation free quotation.



Timber World

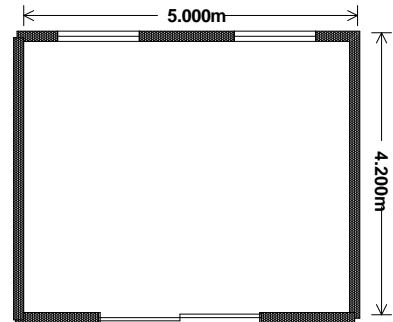
Portable Cabins—Sample Plans

OREGON



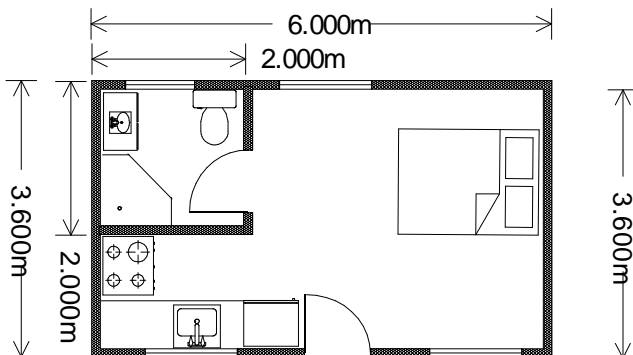
6 x 2.4 Studio

REDWOOD



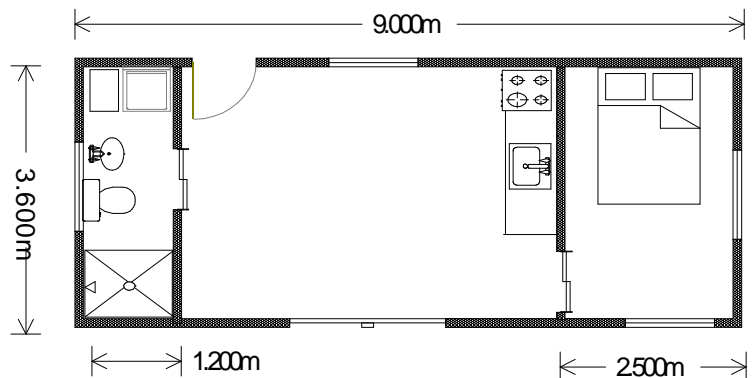
5 x 4.2 Studio

BALTIC



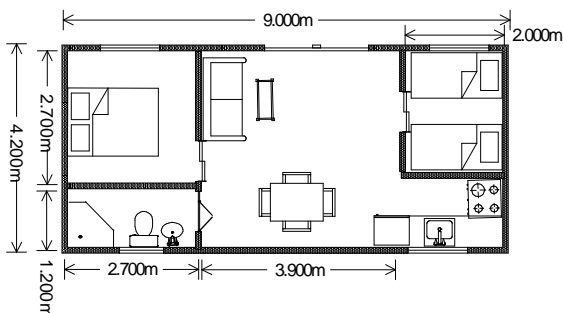
6 x 3.6 One Bedroom

BLACKWOOD



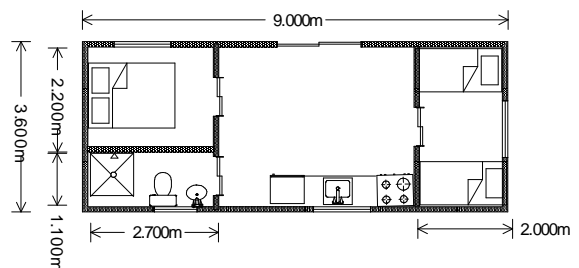
9x 3.6 One Bedroom

CEDAR



9x 4.2 One Bedroom

MACRACARPA

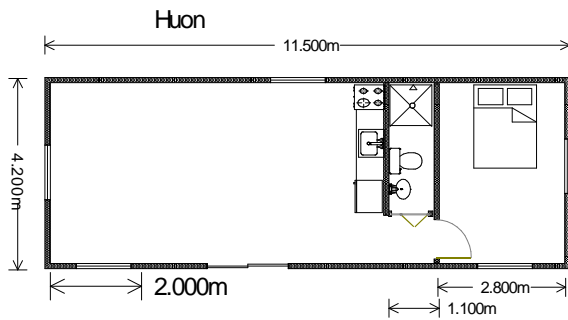


9x 3.6 or 11.5 x 4.2 Two Bedroom

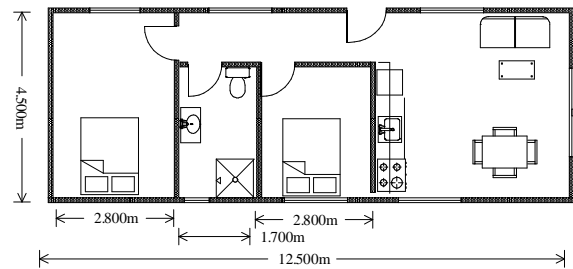
Please note: As Timber World build to order these plans can be amended to meet your requirements.
 These sample plans are intended as a guide.
 Please refer page 9 for prices and inclusions
 Prices effective as of 1.8.11, include GST and are subject to change without notice.

Timber World

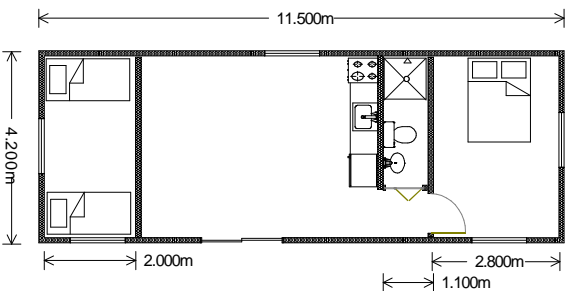
HUON



DEVONPORT

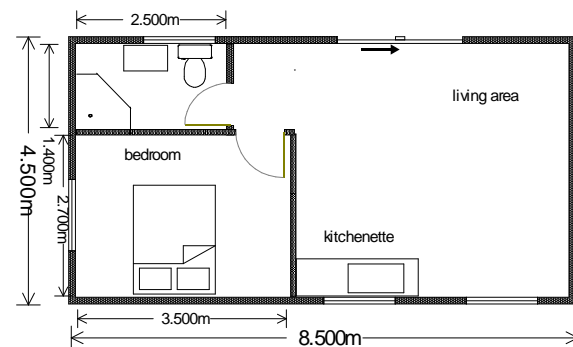


12.5 x 4.5 Two Bedroom



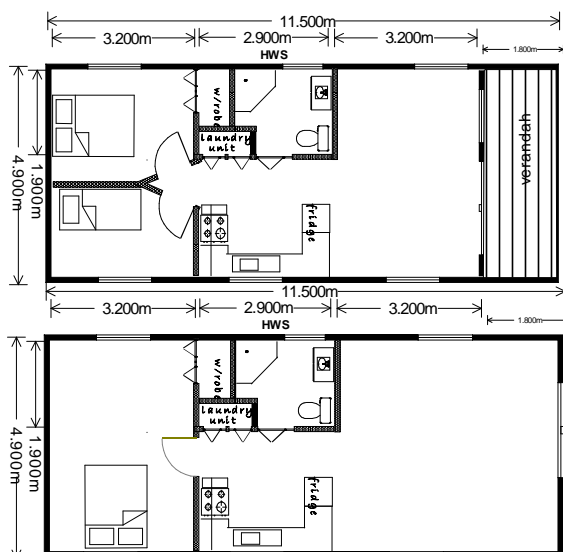
9 x 4.2 11.5 x 4.2 One or Two Bedroom

ROSS



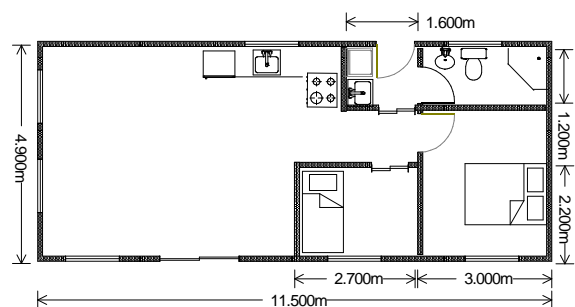
8.5 x 4.5 One Bedroom

LONGFORD



11.5 x 4.9 One or Two Bedroom
With or without verandah for extra
Floor space

MYRTLE

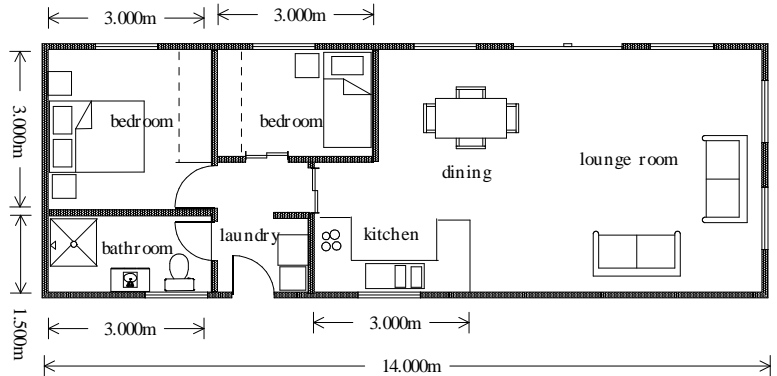


11.5 x 4.9 Two Bedroom

Timber World

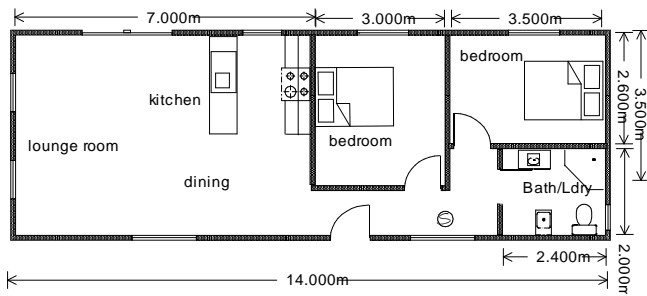
Legana

14 x 4.9 Two Bedroom



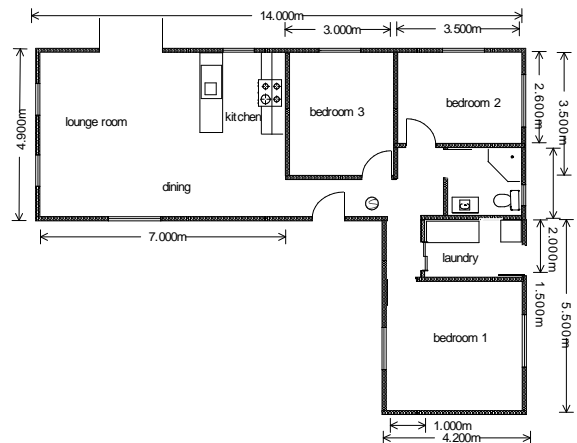
Westbury

14 x 4.9 Two Bedroom



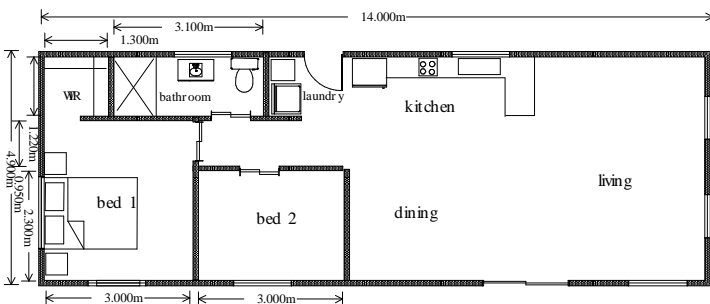
Westbury Mk 11

3 bedroom and separate laundry
14mx 4.9 and 5.5 x 4.2



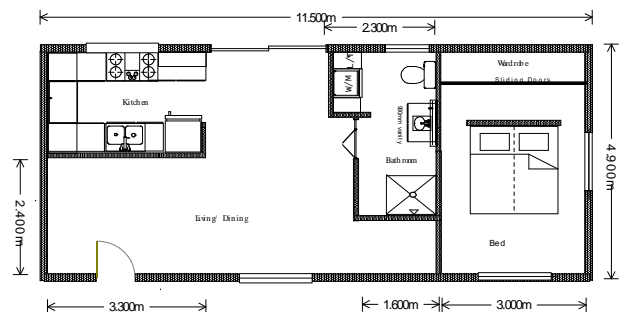
Beauty Point

14 x 4.9 Two Bedroom



Strahan

11.5 x 4.9 One Bedroom

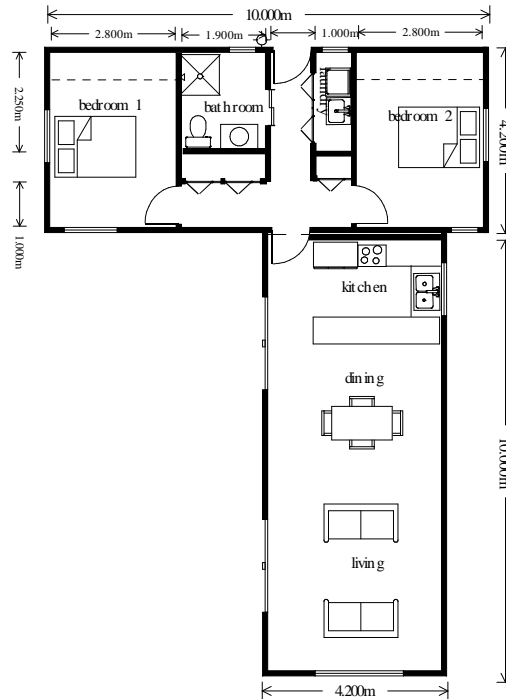


Please note: As Timber World build to order these plans can be amended to meet your requirements.
These sample plans are intended as a guide only.
Please refer to page 9 for prices and inclusions

Timber World

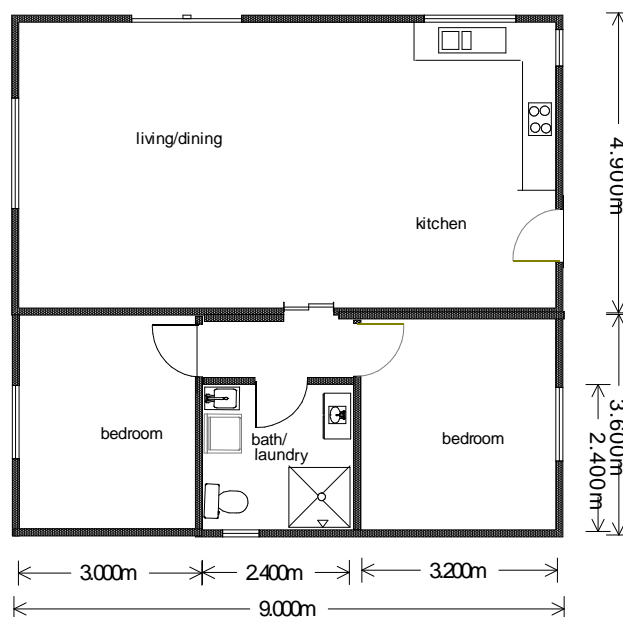
New Norfolk

2 / 10 x 4.2 2 Bedroom



PIPERS BROOK

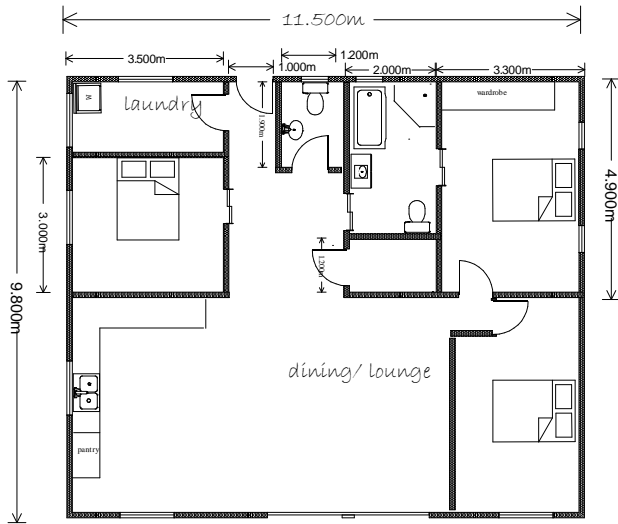
9 x 8.4 2 Bedroom



Timber World

Spacious living

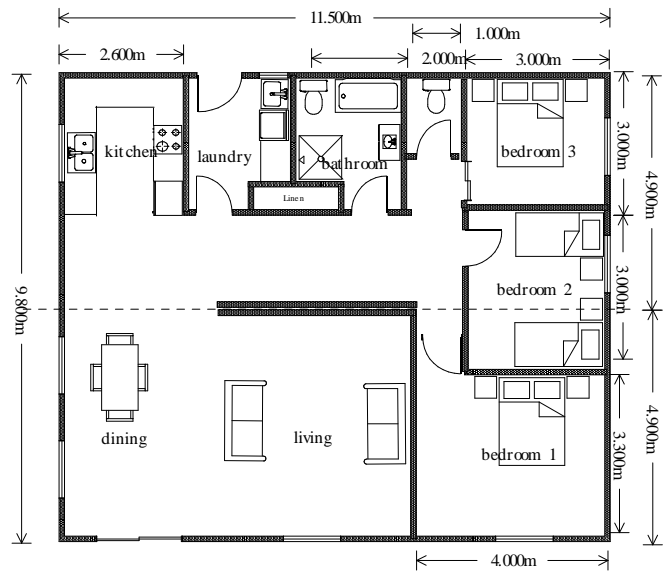
11.5 x 9.8 2-3 Bedroom



St Helens

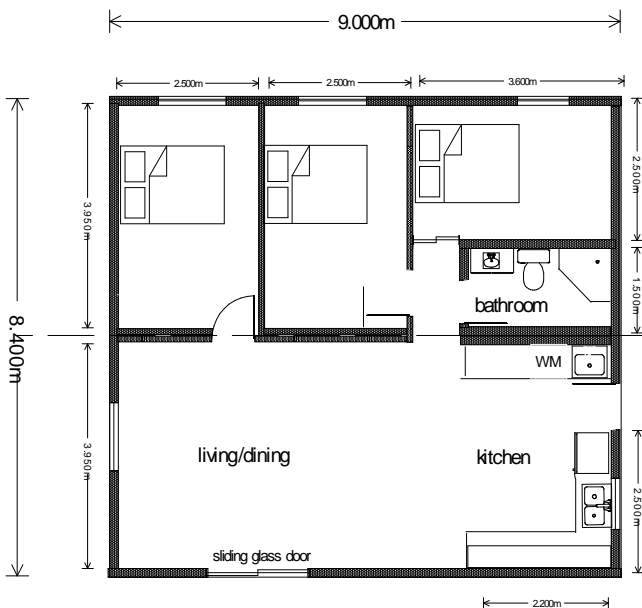
11.5 x 9.8 3 Bedroom

This design can be manufactured in 14m length



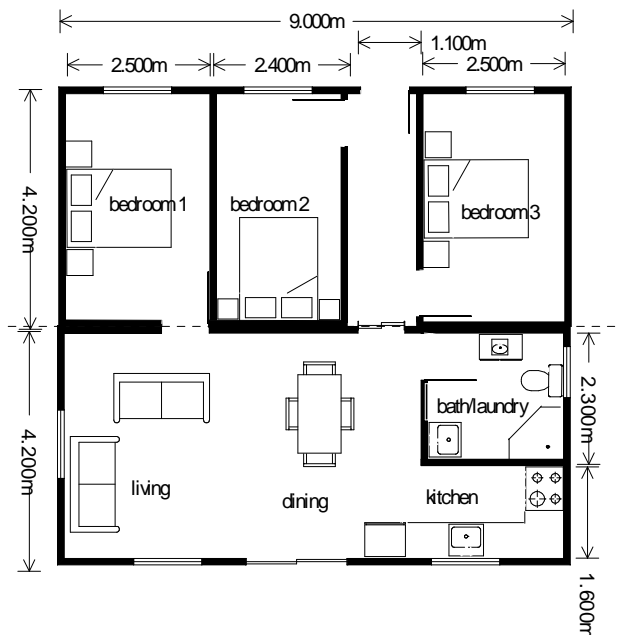
Economical living

9 x 8.4 2-3 Bedroom



Beach House

9 x 8.4 3 Bedroom

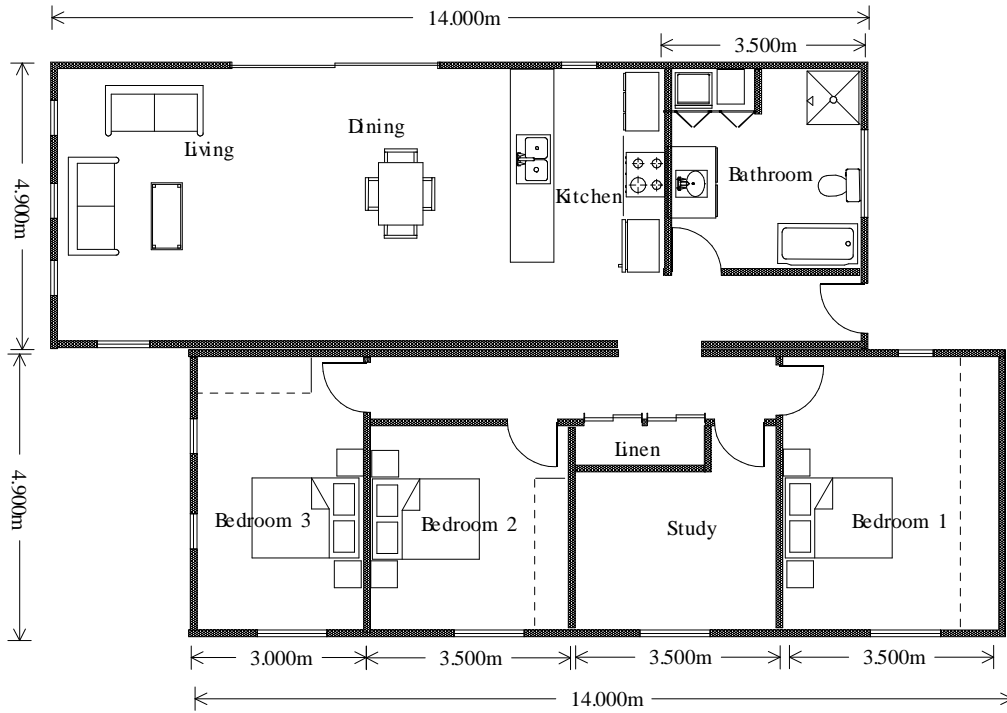


Both of the above sample floor plans can have a study or third bedroom as an option

Timber World

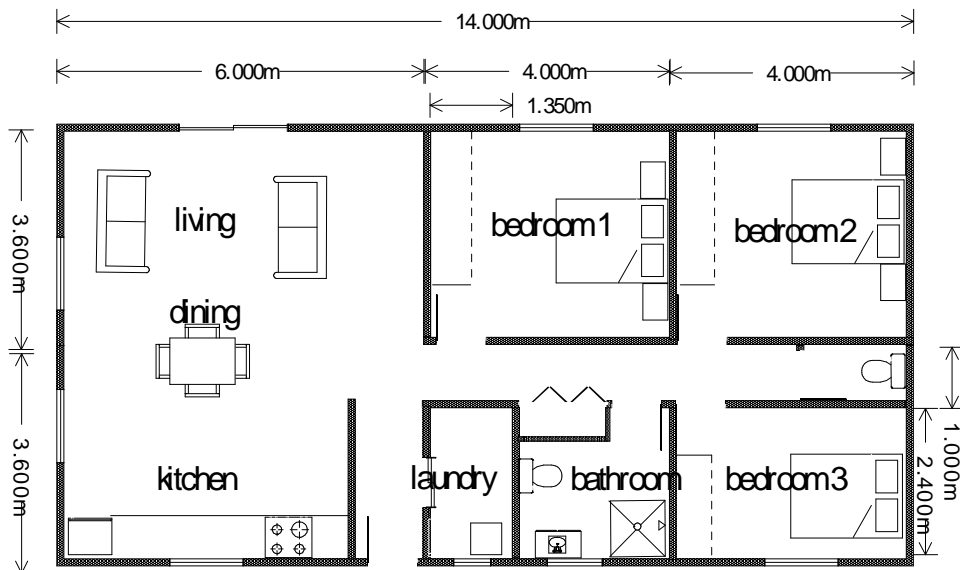
Port Sorrell

2 / 4.9 x 14 3 or 4 bedroom



Nubeena

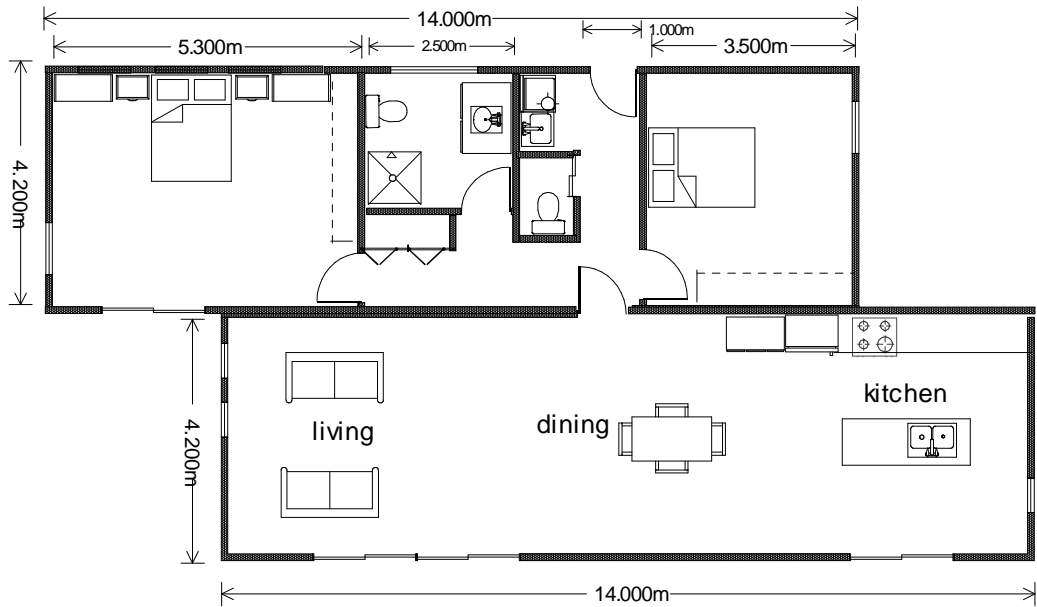
7.2 x 14 3 Bedroom



Timber World

Bakers Beach

2/ 14 x 4.2 2 Bedroom



Inclusions

All prices are based on the following inclusions as an indicator of sample price. We quote individually for each project with your choices of materials, window sizes, kitchen size and style, wardrobes etc. Note that decks and verandahs can be included to your plans to be built by your onsite tradesperson.

Please contact us for a free no obligation quotation.

- Cedar Weatherboards or Colorbond Cladding
- Colorbond roof
- Oregon rafters and ridge beam.
- Aluminium sliding windows with screens and locks
- Pine or Plaster lining
- 12mm overlay flooring
- Tiles in bathroom and laundry area.
- Insulation- Walls R2.5 Batts and Brane VHP
- Ceiling R5 Batts and Proctor Wrap
- Floor R3.5 Batts
- Laminex Kitchen with sink– white goods not included in price.
- Dual flush toilet suite
- Shower, basin/ vanity and tap ware. Laundry tub and washing machine taps where shown
- Hot water service -160 or 125 litre
- Internal plumbing and wiring
- External four panel wooden door
- Internal four panel doors
- Joining of double units on site, if required.
- Plans and Engineering Certification
- Management of your application until building approval stage

Lock up

- Cedar weatherboards
- Colorbond roof
- Oregon rafters and ridge beam
- Aluminium sliding windows with screens and locks
- Pine lining in ceiling only
- Sheet flooring
- Insulation-
 - Ceiling -R2.5 Batts and Brane VHP
 - Walls—Brane VHP
 - Floor R3.5 Batts
- Basic wiring in ceiling
- External four panel door
- Plans and Engineering Certification
- Management of your application until building approval stage

Options and Extras

Weather boards/ Cladding	Cedar, Colorbond, Oregon, Treated pine, Baltic – round or square edge, Macracarpa
Roofing	Colorbond, Zincalum, Galvanized, Aluminum Tiles
Lining	Pine, Plaster, Tas Oak or minor species timbers
Flooring	Tasmanian Oak- Standard or Feature grade, Pine, Aquabar sheet, or minor species timbers
Windows	Aluminum, Wood - Single or double glazed UPVC- double glazed. Sliding or awning. Choice of size and colour
Painting	We can include internal and external painting in our quotation
Vinyl or Tiles for bathroom and laundry	Colour choice from selected ranges
Kitchen	Price calculated by meter with a choice of door, bench styles and materials. We can include a basic stove or a model of your choice in our quotation
Wardrobes	Price calculated per meter. Choice of door styles available

